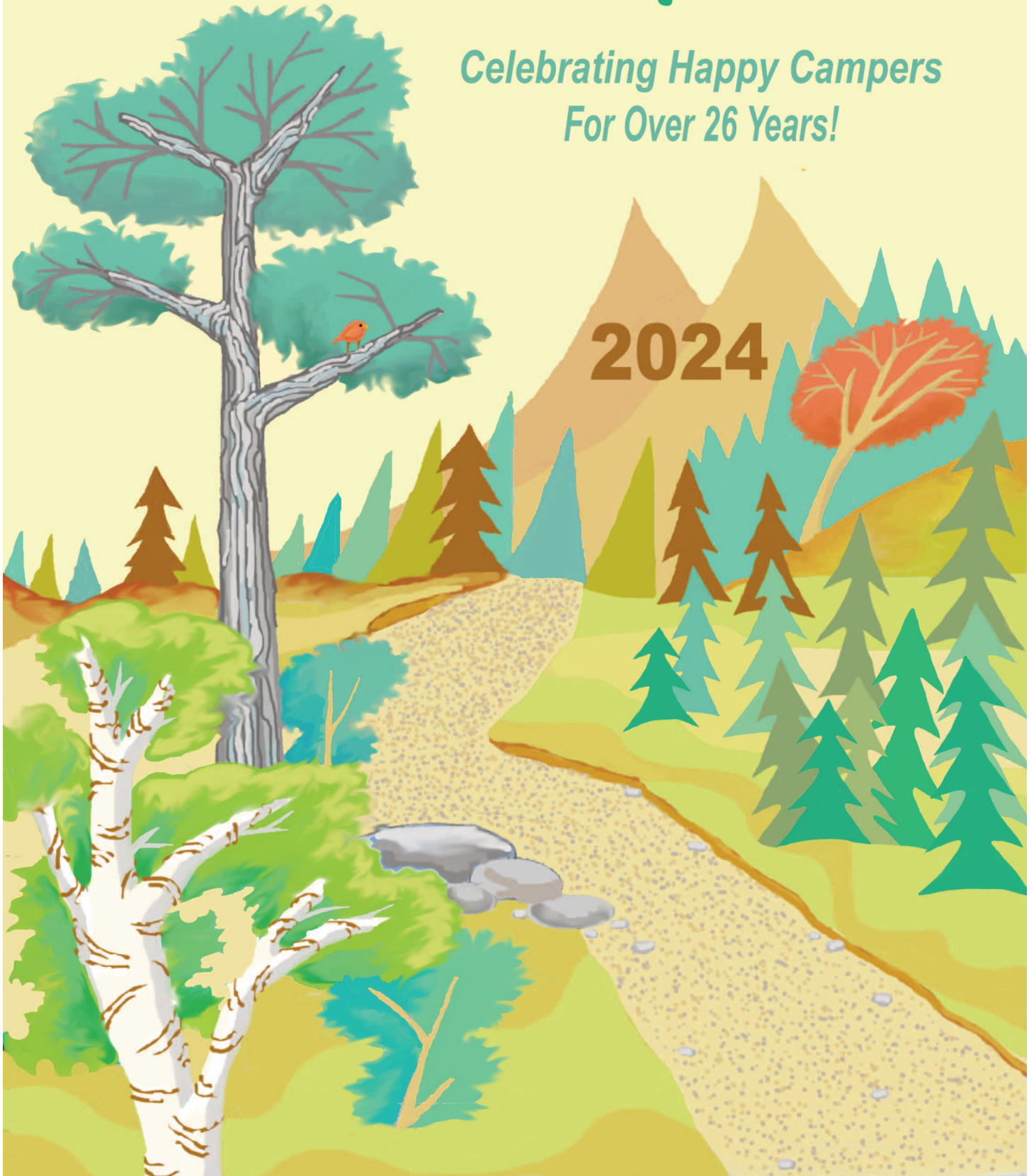


RHODE ISLAND Summer Camp Guide

*Celebrating Happy Campers
For Over 26 Years!*

2024





YOUR CHILD CAN DO ANYTHING

WITH THE RIGHT SUPPORT



Your Child Is Unique. With Sylvan, You'll Get Personalized Support to Match.

If you're like most families, you don't believe that education should be "one size fits all." You want learning to be personalized to your child's talents and needs. At Sylvan, it is.

Whether your child needs help catching up, taking on advanced classes or getting ready for big college dreams, you'll find the perfect program to fit your needs and budget!

Here's what you can expect with Sylvan's proven approach:

- Our one-of-a-kind Sylvan Insight™ Assessment to give you a **deeper understanding of your child's individual needs.**
- A personal and adaptive learning plan created just for your child to **get the best results and to grow skills quickly.**
- Expert, Sylvan-certified teachers who are experts at **challenging and inspiring your child.**
- School-aligned curriculum that aligns with state standards so what your child is learning at Sylvan **will make a direct impact in school!**
- Results, results, results. We measure your child's progress with each lesson, keep you involved and **collaborate with school to ensure progress.**

TAKE THE FIRST STEP

Schedule Your Child's Insight™ Assessment now just \$49 for a limited time!

Sylvan of Coventry
401-823-0011

Sylvan of Cumberland
401-334-9309

rjohnson@sylvanne.com

Learning Should Be Personal™

STUDY SKILLS MATH ACT/SAT PREP WRITING READING HOMEWORK HELP



Camp Director Frank Luca
SUMMER HOOP CAMPS
For Boys & Girls ages 5-15

CAMP LOCATIONS:

- Burrillville** @ Middle School • July 8-11, ages 6-7, 9:00-12:00 & ages 8-14, 9:00-2:00
- Cumberland** @ High School • June 24-June 28 (tentative) and 2nd week tba, 8:30-2:00, ages 6-13
- Cumberland** @ Mercymount Country Day • **Multi-Sports Camp**, July 8-12, ages 5-13 and **Summer Hoops Camp** August 12-16, ages 5-13, 8:30 - 2:00
- East Greenwich** @ High School • **Summer Hoops** July 15-19 for ages 5-13, 9:00-2:00 and and **Boys "Elite" Camp** tba, ages 8-15, 8:45-11:45am
- East Providence** @ Providence Country Day • July 22-July 26 and August 12-16 for ages 5-15, 9:00-2:00
- Providence** @ Moses Brown • June 17-21, ages 5-15, 8:30-3:00 (half day option 8:30-12:00)
- Scituate** @ High School • June 24-June 28, ages 5-14, 9:00-2:30
- South Kingstown** @ Rec Center • July 15-19 and Aug 26-Aug 30, ages 6-16, 9:00-3:00 (half day option 9:00-12:00)

CAMP HIGHLIGHTS: Shooting & Offensive Skill Development • Individual Skills Competitions
 Advanced Skill Stations • Free Camp T-Shirt • Experienced Coaches

For more information call **Frank Luca 401-639-0814**. Limited spots available.
 Register online www.1on1basketball.com • **SIBLING & MULTI-CAMP DISCOUNTS**

NEW ENGLAND'S MOST HANDS ON AQUARIUM



MARINE BIOLOGY CENTER

Open to the public daily from 12:00 - 5:00

www.biomescenter.com



Exciting Field Trip Destination For Camps, Scouts, and Groups!

6640 Post Road, North Kingstown, RI ● Phone: (401) 885-4690



Now hiring teachers!

Looking for a fun summer job? Join Dr. Day Care as a teacher or assistant! Full time and part time positions, Monday - Friday. 50% child care discount for employees.

www.drdaycare.com/hiringsummer

Dr. Day Care
 Learning Center

Infant, Toddler, Preschool/Pre-k, & School Age teachers





WHERE FUN & ADVENTURE BEGIN

YMCA of Greater Providence Day & Overnight Camps

Build your summer camp adventure at www.YCampAdventure.org today!

Barrington, RI | Warwick, RI | Seekonk, MA | Peace Dale, RI | South Kingstown, RI



Camp Highlights!

1-On-1 Basketball Camp, 3
 Beautiful Beginnings, 5
 Camp Aldersgate, 5
 Aquidneck Island Day Camp, 12
 Artists' Exchange Summer, 19
 BaseCamp Adventures, 23
 Biomes, 3
 Boys and Girls Clubs of Pawtucket, 16
 Boys and Girls Clubs of Providence, 6
 Chefs Choice Cooking Camps at JWU, 8
 Chess Master Connections, inside back
 Community Boating Center, 6
 Dr. Day Care, inside cover
 Dream Big Gymnastics, 18
 Dwares JCC, 7
 The French American School, 8
 Gamm Theatre Camp, 19
 Camp Grosvenor, 12
 Herreshoff Sailing Camp, 12
 Camp Invention, 25
 Jessee Soccer, 25
 KALM Psychoeducational Camp, 21

KR Baseball Academy, 8
 Launch Summer, 20
 Longplex, 13
 Moses Brown, 9
 Mother of Hope, 9
 Newport Art Museum, 14
 Newport YMCA, 14
 Next Stop Broadway, 11
 Ocean State Swim Camp, 15
 Pennfield School, 15
 Providence Country Day School, 16
 Providence Performing Arts Center, 10
 Providence Tennis, 9
 Rhode Island College Sports, 11
 Rhode Island Fencing Academy & Club, 16
 Sail to Prevail, 17
 Salve Regina Lacrosse, 17
 The Sew-Op, 21
 St. Andrews Summer, 17
 Studio Playground, 11
 Sylvan Learning Center, inside front cover
 Taste Buds Kitchen, 21
 Teamworks, back cover

Warwick Center for the Arts, 22
 Wide World Wolf Pack, 24
 YMCA Pawtucket, 26
 YMCA Providence, this page



Rhode Island Family Guide™

PUBLISHER/EDITOR

Sheryl Rachmil
rhodeislandfamilyguide@gmail.com

ART

Tracy Butler

P.O. Box 613
 Wyoming, RI 02898
 401-247-0850

risummercampguide.com

The Rhode Island Family Guide assumes no responsibility for errors or omissions. In addition, inclusion in this book does not constitute a recommendation or endorsement of any camp by the Rhode Island Family Guide.

Copyright © 2024
 Rhode Island Family Guide



Providence & North

*CAMP ALDERSGATE

..... 568-4350

(SEE AD THIS PAGE)

www.campaldersgate.com
1043 Snake Hill Rd., North Scituate.
Camp Aldersgate offers a wide variety of fun spiritual camps for children and youth from all backgrounds. Day and overnight camp programs include arts, music and dance, adventure, and many others. **AGES:** Overnight camp for ages 7-18; Day camp for ages 6-12. **DATES/TIMES:** One-week sessions for both residential and day camp. See our website for dates and rates!

*BEAUTIFUL BEGINNINGS

..... 785-8485

(SEE AD THIS PAGE)

www.bbchildcareri.org
700 Elmwood Ave., Prov.
Beautiful Beginnings is committed to providing high quality early care and education to each of the children in our care.

*BOYS & GIRLS CLUB OF PAWTUCKET

(SEE CAMP RAMSBOTTOM PAGE 16)

www.bgcpawt.org

*BOYS & GIRLS CLUB OF PROVIDENCE

(SEE AD NEXT PAGE.)

The Boys & Girls Clubs of Providence offers a unique summer experience that combines the best of fun, hands-on learning with all the traditional summertime activities that make school vacation special.

Open to all Providence students and a limited number of students who reside outside the city, BGCP's summer program provides daily skills-build-

ing in math and reading with certified teachers each morning, followed by afternoons filled with swimming, gym activities, field trips, outdoor activities, and more. Breakfast, lunch, and an afternoon meal are provided, and programs are available from 8 a.m. to 6 p.m. at three BGCP Clubhouse locations. Summer programs at all Clubhouse locations are staffed by First Aid and CPR-certified counselors.

AGES: Boys and girls, aged 6 to 12

DATES: 8 weeks throughout July and August

CLUBHOUSE LOCATIONS: Fox Point (90 Ives Street, Providence), South Side (1 Louisa Street, Providence), and Wanskuck (550 Branch Avenue, Providence)

REGISTRATION: To learn more, and for rate information, contact the Club Director of the location you are interested in:

Fox Point: Stephanie Silvia, (401) 444-0750 | ssilvia@bgcprov.org

South Side: Melanie Borges, (401) 444-0766 | mborges@bgcprov.org

Wanskuck: Mike Scarpetti, (401) 444-0762 | mscarpetti@bgcprov.org

*COMMUNITY BOATING CENTER

..... 454-SAIL(7245)

(SEE AD THIS PAGE.)

www.communityboating.com
109 India Street, Providence
One-week, sailing/paddling EcoAdventure summer camps offer long-distance picnic cruises, fun on-the-water games and hands-on environmental lessons. Two-week Sailing Camps use kid-sized boats, fun games, and lots of encouragement in hands-on sailing. After-school, adult classes, sailing parties, facility rentals also available.

AGE/RESTRICTIONS: Age 8-16, no previous experience required.

*FRENCH AMERICAN SCHOOL OF RI SUMMER CAMP

..... 274-3325

(SEE AD THIS PAGE 8.)

www.FASRI.org
<https://www.fasri.org/enrichment-program/summer-camp>
75 John St., Providence

AGES: 3 - 10 years old

DATES/TIMES: June 17 to July 19, daily 8:30 am - 3:30pm

The French American School of Rhode Island's 5 weeks of summer camp is designed to provide children (French + non French speaker alike) with the opportunity to explore the French language through a wide range of theme based activities: cooking, craft, science and sports in a safe and caring environment. Contact us for more information.



BEAUTIFUL BEGINNINGS
CHILD CARE CENTER

Through play and a mixture of child choice and teacher directed activities, children acquire the foundation for reading, writing, and logical thinking.



BRIGHT STARS 4★ RATED:

- INFANT - TODDLER -
- PRESCHOOL - PRE-K -

401-785-8485

www.bbchildcareri.org

700 Elmwood Ave., Providence



ADVENTURE STARTS WITH ALDERSGATE

NEW - EcoAdventure
1-Week Sail, Kayak, SUP Camp



KidSail & TeenSail
2-Week Learn-To-Sail Camps



Adult Sailing & NEW SUPs too



COMMUNITY BOATING CENTER
INDIA POINT PARK, PROVIDENCE

Learn more: 401.454.SAIL (7245)
www.communityboating.com

***J-CAMP AT THE DWARES**
JCC **421-4111**
(SEE AD NEXT PAGE.)

www.jewishallianceri.org/
alliance-jcc/summer-j-camp/
DATES: June 24-August 23, Mon-Fri
9am-4pm. Early arrival and ex-
tended day options available
AGES: children 5-15. Themes in-
clude *Superheroes, Safari*
Adventure, Blast from the Past,
Under the Big Top, and more.
Summer J-Camp provides a diverse
and welcoming environment for all
our campers. Using an experiential
learning model, campers will partici-
pate in swimming lessons, sports,
the arts, science, and many more ac-
tivities. The daily schedule will ro-
tate through every activity we offer,
as we strive to focus on the specific
interests of each camper. We provide
lunch daily and have weekly field
trips and specials guests. We wel-
come all faiths and backgrounds.

JWU's CHEF'S CHOICE
COOKING CAMP

..... **598-3012**

(SEE AD PAGE 8.)

Our unique day camps are offered
for kids age 8-17. Activities include
culinary & pastry applications and
demonstrations empowering our
campers to craft regionally and

globally inspired dishes. Campers
will have the opportunity to work
with group collaboration in addition
to personalized guidance from our
chef instructors. We will spend time
exploring topics tailored to kids of all
ages in a highly interactive and par-
ticipative curriculum, while also pro-
viding plenty of time to relax, be
social, and just have fun. Register at
the following link: [www.jwu.edu/
admissions/welcome/summer-
at-jwu/providence.html](http://www.jwu.edu/admissions/welcome/summer-at-jwu/providence.html).
DATES: July 22-26 or July 29-Aug 2.

***KR BASEBALL ACADEMY**
..... **724-7555**

(SEE AD PAGE 8.)

www.KRBaseball.com
Slater Park Athletic Complex,
Newport Ave., Pawtucket
Instruction on hitting, pitching,
fielding, base running and sliding.
All campers will be divided by age
group and will go through instruc-
tion stations from 9:00am-12:00pm.
12:00pm-12:30pm lunch provided
for all campers. 12:30pm-2:30pm
games run and organized by K R
Baseball Academy. Camp is limited.
DATES/ TIMES: July 15-19, 8:30am-
2:45pm
AGES: 7-12. To register, please call
KR Baseball Academy at 401-724-
7555. Space is limited.
COST: \$395.



BOYS & GIRLS CLUBS
OF PROVIDENCE

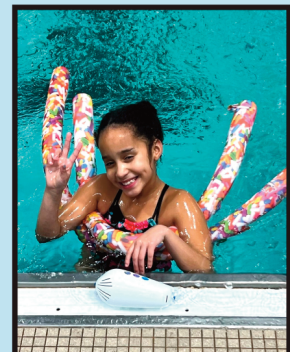
*Offering a unique summer experience
that combines the best of hands-on
learning with the fun activities that
make summer vacation special!*

- 8 Week Programs (July and August)
- For Providence Area Kids Ages 6-12

Locations:

- **Chad Brown:** David Tavares
(401) 709-4813 | dtavares@bgcprov.org
- **Fox Point:** Stephanie Silvia
(401) 444-0750 | ssilvia@bgcprov.org
- **South Side:** Melanie Borges
(401) 444-0766 | mborges@bgcprov.org
- **Wanskuck:** Mike Scarpetti
(401) 444-0762 | mscarpetti@bgcprov.org

Visit bgcprov.org for more details.





**Summer J-Camp
June 24 – August 23**

**J-Campers | Grades: K-6
Counselors in Training (CITs) | Grades: 7-10**

***The Dwares JCC team has been working hard to create the best
Summer J-Camp experience for your child!***

Summer J-Camp provides a diverse and welcoming environment for all our campers. Using an experiential learning model, campers will participate in swimming lessons, sports, the arts, science, and many more activities. The daily schedule will rotate through every activity we offer, as we strive to focus on the specific interests of each camper.

We provide lunch daily and have weekly field trips and specials guests.

Registration now open!
Visit JewishAllianceRI.org/Camp
or scan the QR Code:



401 Elmgrove Avenue, Providence | jewishallianceri.org | 401.421.4111



Chef's Choice Summer Cooking Camps for Kids & Teens

Calling all aspiring chefs!

JWU offers kids 8-17 the opportunity to put their culinary creativity to work. This summer, join our day camps for group and personalized sessions with chef instructors. Campers will hone their culinary skills while having fun and tasting dishes from around the world.

July 22 - 26, 2024 | July 29 - August 2, 2024

For more information and to register
Visit <https://www.jwu.edu/admissions/welcome/summer-at-jwu/providence.html>

THE FRENCH AMERICAN opening minds SCHOOL AN INTERNATIONAL SCHOOL

SUMMER PROGRAM Ages 3 -10 years



JUNE 17- JULY 19
Daily: 8:30AM to 3:30PM

75 John Street
Providence, RI 02906

401-274-3325
www.FASRI.ORG

*MACCOLL YMCA 725-0773 (SEE AD PAGE 26.)

32 Breakneck Hill Road, Lincoln. All children, ages 5-15, are welcome at Camp MacColl at the MacColl YMCA in Lincoln, Rhode Island. The camp sits conveniently located right off of Route 146 on a beautiful 126 acres. Campers will have the opportunity to experience swimming, arts and crafts, sports, archery and much more led by our well-trained staff. At camp teens will have many opportunities to develop self-confidence and leadership skills in our newly developed Leaders-in-Training and Counselors-in-Training programs, along with our Voyagers travel trip camp. Immersive Camps are an exciting new addition to camp. From Percy Jackson to Sports Medley, or Harry Potter to Culinary Camp, there are options for campers with a wide range of interests.

DATES/TIMES: Camp runs daily from June 24th - August 19th from 7:00 AM to 6:00 PM (Before and After Care are held from 7:00 AM- 8:30 AM & 4:30 PM - 6:00 PM for an additional price.) **COST:** Price varies from \$280- \$325 per week depending on camp with Financial Aid and DHS availability. Visit www.ymcapawtucket.org for more information.

*MOSES BROWN SUMMER CAMPS 831-7350, x150 or x295 (SEE AD NEXT PAGE.)

250 Lloyd Ave., Providence
<https://camps.mosesbrown.org> On the East Side of Providence offering traditional, sports, STEM, and specialty camps including Chess, Marvelous Discoveries, My 1st Lemonade Stand, Soccer, Tennis, Young

KR Baseball Academy



SUMMER CAMP 2024

July 15th - 19th

8:30am - 3:00pm ♦ Ages 7-12

DRILLS IN: HITTING FIELDING PITCHING
BASE RUNNING SLIDING INFIELD OUTFIELD

Slater Park Athletic Complex
Newport Ave., Pawtucket, RI

To register, call 401-724-7555
or krrbaseball@yahoo.com

Debaters and more! RISE Camps are the ultimate create your own adventure with options from tie-dye to woodshop to Magic the Gathering. Our camps are fun filled days of discovery that make the summer fly by. Extended hours and lunch options.

*MOTHER OF HOPE DAY CAMP 568-3580 (SEE AD NEXT PAGE.)

www.motherofhopecamp.com, 1589 Putnam Pike, Box W, in Chepachet, Rhode Island. Mother of Hope, an agency of the Diocese of Providence, is accredited by the American Camp Association and a member of the RI Association of Camps. Located on beautiful Echo Lake in Chepachet, RI., we offer a traditional camp that includes swimming, canoeing, prayer, archery, team-building challenge course, arts/crafts, hiking, sports, nature & pet education, and children's liturgies. We welcome children of all backgrounds and faiths.

AGES: Boys and Girls Ages 5-12, 9am-3:30pm. Visit our website for Summer Camp 2024 Dates & Exciting and Fun Themed Weeks!

*NEXT STOP BROADWAY 574-3105 (SEE AD PAGE 10.)

Next Stop BROADWAY® transports local theatre-loving youth ages 10-17 to the "Golden Age of Broadway." Through workshops, classes, and rehearsals, they tap their creativity, hone their skills, and cultivate their passions in the collaborative context of the ensemble - all in one of the nation's foremost independent theatres! This five-day, rigorous immersion into the music and choreography of iconic chorus numbers culminates in an "Opening Night" performance for their families and friends. Designed both for those with and without theatre experience! **DATES:** July 15-19, 2024 and July 22-26, 2024.

New for 2024! PPAC is also now offering an audition preparation course for ages 16-20.

VISIT US ONLINE AT
RISummerCampGuide.com
for more summer camps!

REGISTER NOW FOR
SUMMER CAMP!



**HALF &
FULL DAY
OPTIONS**

**JUNE 17 - AUG 30
AGES 4 - 17**

PROVIDENCE TENNIS CENTER AT ROGER WILLIAMS PARK
401-935-4336 • providencetennis.com

*Don't forget to register for
Summer Vacation Camp!*

**MOSES BROWN
CAMP REGISTRATION
IS OPEN AND WE
HAVE ANOTHER SEASON
OF SENSATIONAL
RECREATIONAL
OPPORTUNITIES PLANNED
FOR CHILDREN
AGES 3-17
(INCLUDING ALL OF YOUR
SPORTS & STEM FAVORITES.)**

We Can't Wait!



CALL 401-831-7350 x150 OR
VISIT camps.mosesbrown.org
FOR DATES AND DETAILS.



Mother of Hope Camp

A ministry of the
Roman Catholic
Diocese of Providence

Do you have a child
aged 5-12 years old?
Our Day Camp is for you
2024 SUMMER DAY CAMP

More than just summer camp

On beautiful Echo Lake
in Chepachet, RI

June 17

through

August 9

1589 Putnam Pike,
Chepachet, RI 02814

www.motherofhopecamp.com



- BUSING
- BOYS & GIRLS AGES 5 - 12
- WEEKLY & DAILY OPTIONS
- AFFORDABLE PRICING
- SPECIAL DISCOUNTS
- SECURE ONLINE REGISTRATION
- OUTDOOR CAMP ACTIVITIES
- FRIENDLY & PROFESSIONAL STAFF
- Live ~ Learn ~ Grow



Mother of Hope Camp
is the reason why
we love summer!



www.motherofhopecamp.com

[email:motherofhopecamp@dpvd.org](mailto:motherofhopecamp@dpvd.org)

401-568-3580



NEXT STOP BROADWAY



**A SUMMER INTENSIVE FOR
THEATRE LOVERS AGES 10-17**

**ON STAGE AT PPAC
JULY 15 - 19 & 22 - 26, 2024**

FINANCIAL AID AVAILABLE



[PPACRI.ORG/NSB](https://ppacri.org/nsb)

*PAWTUCKET YMCA

..... 727-7900

(SEE AD PAGE 26.)

Children of all ages can expand their horizons while having a fun-filled and exciting summer. Campers travel by bus from our Pawtucket Family YMCA to our amazing outdoor facility of YMCA Camp Westwood. Here they can enjoy learn boating and swimming in the beautiful Quidnick Lake Reservoir. In addition, they can take part in traditional outdoor camp activities like archery, ropes course, golfing, swimming, arts and crafts, and sports. Camp Westwood and the Family Y are accredited by the American Camp Association.

DATES/TIMES: Camps run daily June 17 through Aug. 23 from 8:30am-4:30pm. Contact the Pawtucket Y for bus times. **COST:** \$300 -325/week Includes a nutritious lunch. State Vouchers and DHS accepted. Financial aid and sibling discounts are available. Visit ymcapawtucket.org for more information.

*PROVIDENCE TENNIS CENTER JR SUMMER CAMP

..... 935-4336

(SEE AD PAGE 9.)

Roger Williams Park
www.providencetennis.com

DATES/TIMES: June 17 - August 30
Our focus is to improve every player's physical, mental, tactics and technical conditioning. Players are strongly encouraged to also participate in USTA Summer Junior Tournaments, Ladder Matches, and Junior Team Tennis Summer Matches on Wednesday afternoons. Summer Camp is open to players of all skill levels, ages 4-17.

*RHODE ISLAND COLLEGE SUMMER SPORTS CAMPS

..... 456-8007

(SEE AD THIS PAGE.)

600 Mt. Pleasant Ave., Providence.
www.goanchorman.com
jdalessandro@ric.edu

The Rhode Island College Summer Sports Camps, directed by some of the area's finest college coaches will provide outstanding instruction in a fun and exciting environment. **Boys and girls ages 7-15 of all skill levels** can choose from the following camps; Basketball, Baseball, Softball, Soccer, Gymnastics, Lacrosse, Volleyball, and Tennis.

DATES/TIMES: The 7 week camp program begins June 24 and concludes on August 16. Each sport

THEATER CAMP

Studio Playground 

August 12-16

&

August 19-23

LINCOLN WOODS STATE PARK

STUDIPLAYGROUND.ORG

specific instructional camp takes place from 8:30 a.m. - 12:30 p.m. The Extended Day Program (12:30 p.m. - 4:00 p.m.) is also available for those looking for a full day option and consists of lunch in the RIC Dining Center followed by swimming, sports activities, and fun games and contests at the Recreation Center.

COST: Sport Specific Instructional Camps: \$250 per week; Early Registration Rate: (Register by May 15) \$200 per week; Extended Day Program: \$240 per week; After May 15, Rate: \$250 per week. \$300 for extended day. To download our registration form please visit goanchormen.com. **CONTACT:** For more information please contact Jayna Ryan at jryan@ric.edu or call the athletic department at 401-456-8007. **SAVE! Early Registration Discounted Rates only available until May 15, 2024.**

*STUDIO PLAYGROUND

(SEE AD ABOVE.)

Lincoln Woods State Park
www.studioplayground.org
2 Manchester Print Works Road,
Lincoln, Rhode Island. Programs for kids of all ages based in physical acting. Explore the benefits of laughter through movement, performance, and playful improvisation. Our summer camp includes games, crafting, and designing as students work together in small groups to create characters for an original show. Each week is offered separately. Students can sign up for multiple weeks. Each week culminates in an outdoor performance for friends and family.

RHODE ISLAND COLLEGE SUMMER SPORTS CAMPS



BASKETBALL • BASEBALL • SOFTBALL
SOCCER • TENNIS • GYMNASICS
LACROSSE • VOLLEYBALL

Boys & Girls Ages 7-15

www.goanchormen.com 401-456-8007



BOYS & GIRLS CLUBS
OF NEWPORT COUNTY

A fun-filled
summer awaits at



REGISTER ONLINE TODAY!

www.bgcnewport.org/camp-grosvenor
Questions? Contact us at 401-847-6927



East Bay

(including South-Eastern MA.)

***AQUIDNECK ISLAND
DAY CAMP 864-3183**

(SEE AD THIS PAGE.)

Middletown/Portsmouth
AquidneckIslandDayCamp.com

CONTACT:

AquidneckIslandDayCamp@gmail.com
Fun, Friends & Adventure! Our campers spend rich days filled with the exciting summer fun that Aquidneck Island has to offer. We offer a wide selection of activities, which include: sailing, the beach, hiking, field trips, POW Science, art, and more! Plus, to prevent the "summer slide" we integrate academic learning into each day and make learning fun and rewarding for campers. **AGES:** 5-13
DATES/TIMES: July 1st - August 22nd - campers can register for a single week, partial week or full summer term, 9:00am - 4:00pm. Extended day 8:00am - 5:00pm. Registration deadline: May 1st.

***AUDUBON SUMMER CAMP
..... 949-5454, x3014**

camp@asri.org
www.audubonsummertimecamp.com
Nature-based camps held at our Nature Center & Aquarium 1401 Hope St., Bristol, RI and our Caratunk Wildlife Refuge 301 Brown Ave., Seekonk, MA. Nature discovery, science, hikes, habitat explorations, live animals, games, crafts and lots of outdoor FUN!

- SAILING
- SWIMMING
- POW SCIENCE
- ART
- SPORTS
- FIELD TRIPS
- & MORE!



FUN FRIENDS & ADVENTURE

AQUIDNECK ISLAND DAY CAMP

July 1st - August 22nd

Monday - Friday 9:00am-4:00pm

Extended Day 8:00am-5:00pm

Register per week, partial week or full summer
Middletown, RI • (401) 864-3183

www.aquidneckislanddaycamp.com

Learn to Sail!

Enroll NOW



For Full Schedule, visit
herreshoff.org/programs



SAILING LESSONS AT THE HERRESHOFF MARINE MUSEUM

Youth Sailing Summer Camp

Ages 7-15; All Levels of Experience

Sail on Herreshoff 12½

Spring & Fall After School Programs

Adult Private or Group Lessons

Sailboat Rentals

401-396-5834 | K.CUSIC@HERRESHOFF.ORG

***BOYS & GIRLS CLUBS OF
NEWPORT COUNTY**
..... 847-6927
(SEE AD PREVIOUS PAGE.)

www.bgcnport.org
For ages 5-14. **Camp Grosvenor** is an American Camp Accredited site located on 95 acres along the beautiful Pettaquamscutt River in Saunderson, Rhode Island. This 7-week summer day camp offers an exciting array of activities including a high/low ropes course, climbing wall, swimming, arts & crafts, archery, field games, water trampoline, dance, and enrichment activities. Breakfast and lunch are served daily at no additional cost and transportation is provided from several pick-up and drop-off locations throughout Newport County & South Kingstown. Visit bgcnport.org/camp-grosvenor to register TODAY! Questions? Please contact the Front Desk at 401-847-6927.

***HERRESHOFF SEAMANSHIP
PROGRAM 396-5834**
(SEE AD PREVIOUS PAGE.)

www.herreshoff.org
1 Burnside St., Bristol
The Herreshoff Marine Museum offers unique and interactive Summer Camp for youth 7-15. There are 9 weekly sessions during the summer starting the week of 6/17/24. The Herreshoff Seamanship Program teaches the art of seamanship and the principles of sailing. Our classes have a recreational sailing focus with an emphasis on the design, beauty and unique features of these classic vessels. Classes are taught on our Herreshoff 12 1/2s – 16 foot antique wooden sloops, Sea Sprite 23s, Hobie Cats and Bic O'pens and a variety of small keel boats on Narragansett Bay.

Class sizes are limited and will be filled on a first come, first serve basis. Scholarships and sibling discounts available.

***LONGPLEX SUMMER SPORT
CAMP 816-6650**
(SEE AD BELOW.)

www.longplex.com
300 Industrial Way, Tiverton, RI
Longplex offers a week-long multi-sport camp, all summer, giving children of all skill levels the opportunity to be active and participate in a variety of sports, games, and activities. When you step into our state-of-the-art, climate-controlled facilities and meet our friendly counselors and staff members, you will know that your children are in a fun, safe, and stimulating environment!

DATES/TIMES: June 17-August 30. Time 9-4, early drop off 7:30-8:30 and late pick up 4:30-5:30. There will also be 3 lunch options available daily for the campers.

COST: \$249/week. Please give us a call or visit longplex.com you register today. Please give us a call or visit longplex.com for more info. and to register.



VISIT US ONLINE AT
RISummerCampGuide.com
for more summer camps!



2024 SUMMER CAMPS

June 17th
through
Aug 30th

AGES: 6-15

CAMP HOURS: 9AM - 4PM
Early drop off: 7:30-8:30
Late pick up: 4:30-5:30

PRICE BREAKDOWN:
\$249 per week
\$40 per week for lunch add-on
\$10 for early drop off / late pick up

POD SYSTEM:
6:1 Camper to counselor ratio
Campers will be placed in a 12 person pod for the entire week/summer. There will be 2 counselors per pod.

**DON'T WAIT,
SIGN UP
TODAY!**

AED AND
FIRST AID
ALL ON SITE

CONTACT:
[Justin@
Longplex.com](mailto:Justin@Longplex.com)

ACTIVITIES OFFERED:

- Baseball
- Soccer
- Basketball
- Flag football
- Dek hockey
- Kickball
- Beanbag toss
- Trail walks
- Arts and crafts
- Bouncy houses

AND MORE!



BREATHE SAFER, CLEANER AIR
AT LONGPLEX

iWave

REDUCES ODORS & ALLERGENS
KILLS MOLD, BACTERIA & VIRUSES

PROVEN TO REDUCE COVID-19

300 INDUSTRIAL WAY | TIVERTON, RI 02878

***NEWPORT ART MUSEUM
SPRING & SUMMER CAMPS**
..... 848-8200

(SEE AD BELOW.)

www.newportartmuseum.org
26 Liberty Street, Newport
Our team of talented Teaching-Artists are ready to delight and inspire your child with Art-Making Camps all break long.
Spring Camps take place the week of April 15 - 19 for ages 6 - 12. Your child will explore nature themes and discover the joys of making their own clay creations in our artist-led, process-driven, Spring Art Camps. All materials provided. 9:00 am - 2:00 pm | 9:00 am - 12pm
Summer Camp, Newport Art Museum is excited to announce ten weeks of art camps featuring a wide range of themes and mediums designed to inspire and delight children ages 3-16, as they work with talented teaching artists to create paintings, sculptures, comics, animation, fashion, and more.
DATES/TIMES: June 17 - August 23, Full and Half-day options. Scholarships Available.

***NEWPORT COUNTY YMCA**
..... 847-9200

(SEE AD BELOW.)

www.NewportYMCA.org. In today's world, we believe it is more important than ever to give our children a safe place to be a kid: where they can create lasting memories, friendships, excitement, and opportunity for growth. That is what Camp Clarke offers at the Newport County YMCA. We offer a wide variety of activities, from sports, to games, arts and crafts, and many other fun activities. With the help of our well-trained staff, it is our goal to find the right fit for your child and give them their **BEST SUMMER EVER!**
DATES/TIMES: Camp Clarke runs daily from June 24 through August 30 from 8:30 a.m. - 4:00 p.m. Early arrival/late pickup is available, as is scholarship assistance.

***NORMAN BIRD SANCTUARY**
..... 846-2577

www.normanbirdsanctuary.org
583 Third Beach Rd., Middletown.
Norman Bird Sanctuary offers a variety of summer camp programs for children in Grades Pre-K to 8.

All sessions incorporate age-appropriate nature-based activities such as hiking and outdoor exploration, crafts, games, songs, stories, experiments, and more. Programs for older campers incorporate day trips and even a night hike! Visit normanbirdsanctuary.org to register online.

***OCEAN STATE SWIM CAMP**
(SEE AD NEXT PAGE.)

www.oceanstateswimcamp.com
oceanstateswimcamp@gmail.com
All Camps held at Roger Williams University. **Technique Day Camp** is a stroke intensive camp, focusing on enhancing your swimmers technique to create a faster, more efficient stroke, while at the same time enhancing their love for the sport of swimming. Also includes daily instruction on injury prevention, dry-land training, and nutrition for competitive swimming **AGES:** For Boys and Girls ages 7-18. **DATES:** June 24-27 and July 15-18.
Recruiting Showcase Swim Camp is the only recruiting camp in the North East! This is your opportunity to get a feel for what it takes to be an NCAA Collegiate swimmer. All training sessions & staff are real college coaches, who will break up the training sessions in the same manner they would their own program.



NEWPORT
ART
MUSEUM

**SPRING & SUMMER
ART CAMPS**

AT THE NEWPORT ART MUSEUM SCHOOL

NOW ACCEPTING REGISTRATIONS:

Spring Break: April 15 - 19 (Ages 6-12)

Summer Vacation: June 17 - August 23 (Ages: 3-16)

Ten weeklong creative sessions featuring
Clay | Comics | Puppets | Fashion | Sculpture | Painting | More!

www.newportartmuseum.org/camps

26 Liberty Street | Newport, RI | 02840 | (401) 619-7983 | esywolski@newportartmuseum.org



TWO CAMP LOCATIONS!

CAMP CLARKE

792 Valley Road
Middletown, RI 02842

CAMP CFP

933 Anthony Road
Portsmouth, RI 02871

ACTIVITIES INCLUDE:

- | | | |
|-----------|--------------|---------------|
| Swim time | High and Low | Arts & Crafts |
| Rockwall | Ropes Course | Gaga |
| | Sports | And more! |

Financial assistance available; DHS accepted at Camp Clarke.

REGISTER



NEWPORT COUNTY YMCA
792 VALLEY ROAD MIDDLETOWN RI 02842

(Continued OS Swim Camp)

Division I, II, & III coaches will be in attendance, so it's also an opportunity to show your potential to be an impact swimmer on their program. **AGES:** 9th - 12th grade Boys and Girls. **DATES:** June 14-16. Stay in the dorms at RWU and experience college life first hand! Apply soon - space is limited. For more information, visit our website.

***THE PENNFIELD SCHOOL SUMMER PROGRAMS**

..... **849-4646**

(SEE AD THIS PAGE.)

<https://www.pennfield.org/spend-the-summer-at-pennfield/>
110 Sandy Point Ave., Portsmouth.

CONTACT: Moriah Ramos
summer@pennfield.org.

This summer program offers a world of fun and enlightening opportunities for your child to nurture current talents and explore new and exciting interests. Thematic camps include explorations in science, performing arts, athletics and more.

AGES: There are camps for children ages 3 through 8th grade.

DATES/TIMES: Kiddie Camps (ages 3-5) run from 9:00 a.m. - 1:00 p.m. All other Camps run from 9:00 a.m. -

3:00 p.m. **June 17-21** - Under the Sea, Soccer Skills, Full STEAM Ahead, Wizard Academy, Gone Fishing; **June 24-27** - Sweet Treats, Force & Motion Lego Lab, Creative Campers, Ocean Odyssey, Theatre Kids, Amazing Race; **July 1-3** - Party in the USA, Seeing the World, All-Sports Fun, Animal Art; **July 8-12** - Dino Discovery, Into the Galaxy... and Beyond, Magical Animation, Mad About Science; **July 15-19** - Nature Exploration, Animated Friends Adventure, Act Out!, Be an Artist Everyday, Get in the Game; **July 22-26** - Outer Space, Winter in July, Super Hero Adventures, Wilderness Creations; **July 29-Aug 2** - Into the Wilderness, Out of This World, Let the Games Begin, Gone Fishing; **Aug 5-9** - Zoo Animals, Garden Explorers, Once Upon a Time, Wizard Academy; **Aug 12-16** - Fun in the Sun, Wild Explorers, Get on the Dance Floor **COST:** \$250 (Kiddie Camp) or \$375 per week.



***PROVIDENCE COUNTRY DAY SCHOOL (PCD) SUMMER CAMP 438-5170**

(SEE AD NEXT PAGE.)

<https://www.providencecountryday.org/life-at-pcd/summer-at-pcd>
660 Waterman Ave., E. Providence. Hands-on fun for ages 5-15 - You can do it all at PCD!

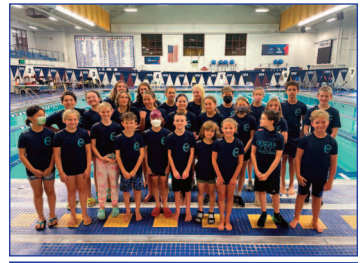
In addition to our long standing Arts & Exploration programs, we hold popular Culinary and Fashion camps each year. We also have an action packed Multi-Sport camp, and we are thrilled to offer Lego Engineering Camps for the second year. Join us for the entire 6 weeks, or pick a program week by week. Energy is high, new friends are made, and summer smiles last all day. It is hands-on fun for ages 5-15.

DATES/TIMES: PCD's 2024 Summer Programs will run June 24 - August 2. Extended day is available until 5pm. Visit our website for specific program details, pricing, and registration.

providencecountryday.org/life-at-pcd/summer-at-pcd

OCEAN STATE SWIM CAMP

at Roger Williams University
in Bristol, Rhode Island



◆TECHNIQUE DAY CAMP◆

BOYS & GIRLS AGES 7-18

Advanced Technique Refinement
Individual Attention & Feedback
Video Analysis of Strokes

With RI's Most Experienced Staff!

◆RECRUITING SHOWCASE SWIM CAMP◆

HIGH SCHOOL BOYS & GIRLS

The Only Recruiting Camp in the NE!
Experience what it takes to be an NCAA Swimmer
With Real Collegiate Coaches!

Matt Emmert, Camp Director
401-580-7313

oceanstateswimcamp@gmail.com

The Pennfield School

JOY • UNDERSTANDING • RESPECT

Summer fun for
children ages 3 -14
on our 19-acre campus.



THEATER * SCIENCE * ARTS * SPORTS * and more!

For information and registration: www.pennfield.org | 401.849.4646

.....
Little Slocum Farm • 110 Sandy Point Avenue • Portsmouth, RI



FOR AGES 8-18

Full + Half Day Camps

Great for
Beginner Fencers!

**"Best organization
I've gotten my kids
involved in."**

- Beth, Providence, RI

RIFAC.COM
(401) 434-2404

East Providence, RI
Professional Coaches

CAMP RAMSBOTTOM

Two-week sessions from
JUNE 24 - AUGUST 16



BOYS & GIRLS CLUB
OF PAWTUCKET



401-722-8840 • bgcpawt.org

***CAMP RAMSBOTTOM**
..... **722-8840**

(SEE AD THIS PAGE.)

www.bgcpawt.org
205 Winthrop St., Rt. 44, Rehoboth, MA. Camp Ramsbottom, owned and operated by the Boys & Girls Club of Pawtucket, is an ACA accredited summer day camp with almost 60 years of camping excellence! Offering recreational and educational activities, Camp Ramsbottom provides area families with a rewarding summertime destination for their children. Camp presents fun, adventure, and learning in an ideal New England setting of over 170 country acres. The thrill of new discoveries makes summer camp memorable. From recreation and sports to arts and crafts and drama, Camp Ramsbottom offers many activities that shape lifelong, summertime memories! **AGES:** for youth ages 6-13 **DATES/TIMES:** Two-week sessions running from June 24 - August 16. **COST:** \$525 per two-week session. Extended care is available for an additional fee. R.I. DHS accepted. Scholarships are available first come first served for families that meet income guidelines. For more information, please visit bgcpawt.org or call 401-722-8840.

PCD SUMMER CAMPS

arts • culinary • sports • fashion



HANDS-ON FUN FOR AGES 5-15



Providence Country Day

660 Waterman Ave., East Providence, RI
www.providencecountryday.org/summer

***RHODE ISLAND FENCING
ACADEMY AND CLUB
(RIFAC) SUMMER CAMPS**

..... **434-2404**

(SEE AD THIS PAGE.)

14 Almeida Ave., E. Prov.
www.rifac.com
rifac.info@gmail.com Fencing is a fun, safe sport that hones mind and body through a disciplined blend of determination, skill and competitiveness. RIFAC offers one of the most rewarding fencing camp experiences in the nation. Using a wide range of bouts and fencing-specific games and drills, our programs for children develop coordination, concentration, self-esteem and etiquette. **AGES:** For kids ages 8-18. Beginner through Advanced. No fencing experience required. Equipment provided. **SESSIONS/DATES/TIMES:** Camps are held throughout the summer. Full and half-day camps. Please check website for a complete schedule. Discount for multiple weeks and siblings.

SAIL TO PREVAIL

Rhode Island's Official Disabled Sailing Center

Sailing for children with disabilities



sailtoprevail.org

*SAIL-TO-PREVAIL'S ADAPTIVE AND THERAPEUTIC SAILING PROGRAM

..... 849-8898

(SEE AD THIS PAGE.)

email: patty@sailtoprevail.org and visit website www.sailtoprevail.org

DATES: June 10 to August 15, 2024. Sail To Prevail welcomes children and teens with disabilities, age 7 to 15! This summer, enjoy the freedom and thrill of sailing across Narragansett Bay with an experienced instructor in an adapted, 20-foot sailboat.

Instructors encourage all participants to be active sailors by steering the boat and trimming sails. Sail To Prevail creates opportunities for children with disabilities to overcome adversity through therapeutic sailing. While experiencing the joys of sailing, participants increase self-confidence, feel the camaraderie of teamwork, and improve leadership skills —

— all of which can transfer to conquering challenges in other areas of life. \$70 per boat for a 2-hour sail. Each boat can take up to 5 participants (family members and caregivers are welcome to join the individual with a disability).

2024 SALVE REGINA BOYS LACROSSE CAMP

Hosted by the Seahawk coaching staff and current Salve student-athletes. Campers will enjoy playing on the Gaudet Turf Field. This 4-day camp is designed for rising 2nd thru 8th grade boys who wish to learn and enjoy the game of lacrosse.

SALVE

LACROSSE™

JUNE 24 – JUNE 27

\$350: FULL DAY 9:00AM-3:00PM

\$250: HALF DAY 9:00AM-12:30PM



DIRECTED BY:

SRU Head Coach **Patrick Cooney**

CONTACT:

(401)835-2810 or patrick.cooney@salve.edu

REGISTER:

salveathletics.com/camps/camps-list



summer

at

ST. ANDREW'S

www.summeratstandrews.org



***SALVE REGINA BOYS
LACROSSE CAMP**

..... **835-2810**

(SEE AD PREVIOUS PAGE.)

salveathletics.com/camps/camps-list
The 2024 Salve Regina Boys Lacrosse Camp will be hosted by the Seahawk coaching staff and current Salve student-athletes. Campers will enjoy playing on Gaudet Turf Field. This 4-day camp is designed for rising 2nd thru 9th grade boys who wish to learn and enjoy the game of lacrosse.

DATES/TIMES: June 24-27, 9:00am - 12:30 or 9:00-3:00.

***ST. ANDREW'S SUMMER**

..... **246-1230**

(SEE AD PREVIOUS PAGE.)

www.summeratsaintandrews.org
Summer at St. Andrew's is a non-denominational, co-ed day camp serving campers aged 3 to 17. We offer traditional day camps, sports camps, creative camps, STEAM programs, and academic programs. We specialize in small focused camps with infinite possibilities. Are you ready? Our weekly **Rover** (3-4 yrs.) and **Voyager** (5-7 & 8-10 yrs.) day camps offer children age appropriate themed experiences with small groups of their peers.

Additionally, there are so many exciting options for our older campers including our Pathfinder (ages 10-12) and Trailblazer (ages 13-16) Adventure Programs, Sports and Strength & Conditioning Camps, various arts programs and so much more. Check out our week long residential **LGBTQ+ affinity camp**. Join us for a summer of fun, friendship, learning, and adventure on our beautiful 80-acre campus! Please visit our website to learn about these camps and to see what else we have to offer.

www.summeratsaintandrews.org



REGISTER ONLINE:
WWW.DREAMBIGGYM.COM

DATES

WEEK 1: June 24 - June 28
Beach Week

WEEK 2: July 1 - July 5
Dino-mite Week

WEEK 3: July 8 - July 12
Superhero Week

WEEK 4: July 15 - July 19
Space Week

WEEK 5: July 22 - July 26
Pirate Week

WEEK 6: July 29 - Aug 2
Olympics Week

WEEK 7: Aug 5 - Aug 9
Around the world in 80 days Week

WEEK 8: Aug 12 - Aug 16
Under the Sea Week

WEEK 9: Aug 19 - Aug 23
Disney Week

AGES 5+

8 weeks of camp starting **JUNE 24TH**

FULL DAY: \$60/day*

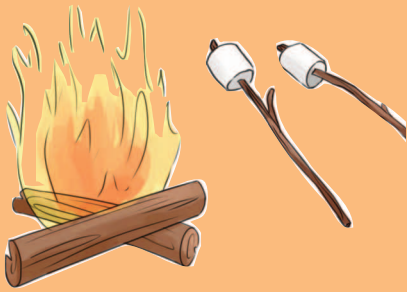
FULL WEEK: \$300

*Extended day is available upon request only for an additional fee

Drop Off Time: 9:00 am - 9:15 am

DREAM BIG GYMNASTICS

41 Comstock Parkway Cranston, RI 02921
401-228-8946



West Bay & South County & Nearby CT

*ARTISTS' EXCHANGE SUMMER CAMP

..... 490-9475

(SEE AD THIS PAGE.)

www.artists-exchange.org
50 Rolfe Square, Cranston
The ultimate in affordable camps for the creative child! Art, Ceramics, Theater and Digital Media camps are taught in our professional art studios and black box theater. Tried and true campers return year after year for awesome experiences. Our friendly staff of artist educators create a safe, welcoming environment so each child is able to fully engage, build confidence, be creative and learn.

AGES/DATES/TIMES: Campers age 5 to age 14 can choose from a variety of camps starting June 17 through August 26. Camp runs Monday through Friday, 9am-3pm with before and after-care available. Artists' Exchange is a 501(c)3 non-profit arts collaborative proudly owned and operated by Gateways to Change, Inc. Registration is live and filling quickly. Visit our website for pricing, descriptions and discounts! For more information and registration 401.490.9475 or www.artists-exchange.org

*DREAM BIG GYMNASTICS

..... 228-8946

(SEE AD PREVIOUS PAGE.)

www.dreambiggym.com
41 Comstock Parkway, Cranston
Nobody does summer fun like Dream Big Gymnastics! This high energy half or full day camp experience is for boys and girls ages 4 and up.

Campers will be placed in age appropriate groups with qualified coaches who put an emphasis on fun! Children can expect to learn gymnastics on all of the equipment including: Vault, Springboards, Uneven Bars, High Bar, Balance Beam, Floor Tumbling and Tumble Trak Trampoline. We also incorporate Ninja Warrior obstacle courses and challenges throughout the day. An exciting new adventure awaits campers each week with an exciting new fun theme each week. Combine all that with arts, crafts, outdoor activities, water-slide/bouncy house fun, outdoor zipline, and you've got all the ingredients that make up Dream Big Summer Camp! For more information: 401-228-8946, www.dreambiggym.com.

*GAMM THEATRE SUMMER CAMPS 723-4266

(SEE AD BELOW.)

1245 Jefferson Blvd., Warwick
www.gammtheatre.org/camps
Campers in grades 2-9 make long lasting connections during our theater workshops that range from one to four weeks, led by professional theater artists. Kids get creative, gain confidence, learn teamwork, and experience the thrill of the stage at our summer camps, which cover improv, backstage skills, introduction to

artists' EXCHANGE
a 501(c)3 non-profit community art center

401.490.9475
50 Rolfe Square
Cranston, RI 02910
artists-exchange.org

Shakespeare, play creation and more! Scholarships and financial aid available. Visit our website for more info: gammtheatre.org/camps or contact Jess Corsentino at 401-723-4266 ext.122 or jc@gammtheatre.org

GAMM THEATRE

SCAN TO LEARN MORE

GRADES 2 - 9
SUMMER THEATER CAMPS
GAMMTHEATRE.ORG/CAMPS

SUMMER CAMP

AT LAUNCH

AWESOME. ACTIVE. SUMMER CAMP!

Launch Camp is a great way for your kids ages 5-13 to create awesome memories this Summer! Our camp is designed to give your kids the best experiences while creating a fun, energetic, and active environment. Let your kids party like Launch stars this summer at our awesome 50,000 sq ft entertainment center. Between our awesome camp counselors and Launch attractions, your child will be sure to have the best summer ever with us!

- BOWLING
- TRAMPOLINES
- NINJA COURSE
- LASER TAG
- ARCADE GAMES
- DODGEBALL
- BOARD GAMES
- ARTS & CRAFTS



SCAN TO REGISTER



WWW.LAUNCHTRAMPOLINEPARK.COM/WARWICK | 920 BALD HILL ROAD, WARWICK, RI 02886

***KALM
COUNSELING SUMMER
PSYCHOEDUCATIONAL
CLASSES 903-4019
(SEE AD BELOW.)**

1215 Reservoir Ave, Cranston
Kalm has a new educational division
Kalm-E! Summer psychoeducational
classes for ADHD and Anxiety-
Learn skills to start the school year
right and manage ADHD or anxiety
symptoms. **AGE:** 8-18. For more
information or to register, visit
Kalmcounselingri.com email
kristenlynchlmhc@gmail.com

***LAUNCH SUMMER CAMP
..... 828-5867**

(SEE AD PREVIOUS PAGE.)
920 Bald Hill Rd., Warwick
info@launchri.com
www.launchri.com
Get ready to LAUNCH into the best
summer camp ever! Experience
camp packed with fun, excitement,
and adventure at Launch Camp!
With awesome camp counselors and
park attractions, your child will have
an awesome active summer. Why
wait? Book Launch Summer Camp
now and give them a camp experi-
ence they'll never forget!

4 HOURS OF ENTERTAINMENT
AND FITNESS EVERY DAY. DAILY
ARTS AND CRAFTS, GAMES, AND
ACTIVITIES!! MORNING, AFTER-
NOON, AND FULL-DAY SESSIONS
ARE AVAILABLE

AGE: Children ages 5-13
Morning Session: 8AM to 12PM
Afternoon Session: 12PM to 4PM
ALL CAMPER'S WILL
RECEIVE A SPECIAL CAMP T-
SHIRT AND LAUNCH SOCKS!

***THE SEW-OP: Sewing &
Quilting Summer Camp
..... 447-5500**

(SEE AD THIS PAGE.)
31 North Main Street,
North Kingstown.
www.the-sew-op.com
AGE: 9+, all sewing abilities from
beginner on up. Lots of fun and ex-
citing projects to choose from!
Please visit our website for more in-
formation.



**Sewing & Quilting
Summer Camps
Ages 9+
July 8- August 23**

31 West Main St.
North Kingstown
www.the-sew-op.com
401-447-5500



**Weekly ADHD and
Anxiety Classes**

Children and teens ages 8-18
learn new skills that will help prepare
them for the upcoming school year!

Groups will run for six weeks,
building on the skills learned each week.
Includes socializing in a safe & fun setting.

Snacks and drinks will also be provided.
Early bird pricing/sibling discount available.

Located at:

Kalm Counseling and Wellness

1215 Reservoir Ave, Cranston, RI 02920



www.kalmcounselingri.com/kalm-e
401-903-4019

TasteBuds
K.I.T.C.H.E.N

**SUMMER
COOKING
CAMPS**

AGES 4 - TEEN

Register Now

**tastebudskitchen.com/
east-greenwich**



SUMMER ART

July-August CAMPS Ages 6-12



Spark your child's
creativity this summer!



Warwick Center for the Arts
WarwickCFA.org | 401-737-0010

BYOI

Bring Your Own Improv

**FAMILY FRIENDLY
COMEDY SHOW**
Fun for all ages!
Every Friday @ 8pm



*TASTE BUDS KITCHEN

..... 885-0535

(SEE AD PREVIOUS PAGE.)

<https://tastebudskitchen.com/east-greenwich/kids-cooking-camps/>
Attention all chefs! Taste Buds Kitchen is offering a full lineup of lip-smack-ing delicious cooking camps. Create and taste your way through new and unique menus each week. Popular themes include **Bake Shop, Culinary Travels, Great American Bake Off, Chocolate Factory, Cupcake and Cookie Bakery** & more. Our engaging and age-appropriate half-day camps are available for kids aged 4-17, with full-day options available for kids aged 10 and up. To register, simply visit our website. But hurry, spots fill up quickly!

*TEAMWORKS CAMPS

WARWICK 463-5565

(SEE AD BACK COVER.)

170 Jefferson Blvd., Warwick.
www.teamworkswarwick.com
At Teamworks Summer Camps, campers will stay busy throughout the day with a variety of fun-filled activities led by our friendly staff. Choose from our TW Camp or one of our Specialty Camps, including: soccer, baseball, basketball, flag football, and more. In addition, campers will enjoy our Wacky Wednesdays and Theme Fridays each week throughout the summer (check out our schedule online)! Summer camps also available at Teamworks Somerset and Teamworks Seekonk!
AGE/REQUIREMENTS: Ages 4-14. All skill levels welcome.
DATES/TIMES: June 17th-August 30th - 8:30am - 4pm w/ extended day option until 5pm.

*WESTWOOD YMCA

..... 397-7779

(SEE AD PAGE 26.)

www.ymcapawtucket.org
Located on Quidnick Reservoir in Coventry, RI YMCA Camp Westwood offers something for every child! This includes swimming, boating, low ropes, archery, sports and arts and crafts. This year Westwood is adding a high adventure course, laser tag, and giant water-slides! Our beautiful facility, incredible staff and amazing activities make each day magical for your child.

Families can choose from our Traditional Day Camp, Immersive Themed Camps or our Specialty Camps. The Westwood Y is accredited by the American Camp Association. Find out why families love being a part of the YMCA!

DATES/TIMES: Camps run daily June 17 through August 23 from 7:30am- 5pm with extended care 7:00am- 6pm.

COST: \$300/week and \$325 for our immersive camps!. Financial aid and sibling discounts are available. Visit www.ymcapawtucket.org for more information

*WARWICK CENTER FOR THE ARTS - SUMMER ART CAMP

..... 737-0100

(SEE AD THIS PAGE.)

www.warwickcfa.org
admin@warwickcfa.org
3259 Post Road, Warwick
Spark your child's creativity this summer! At WCFA, we believe that arts education should start early and be available to all kids so they can express themselves and have fun. Our friendly, trained art educators provide the supplies, inspiration, and guidance ... campers bring the creativity! Join us for one week or the whole summer with plenty of variety, in a safe, air conditioned space for both indoor and outdoor art making! Morning and afternoon sessions available, different themes each week.

AGES: Grades K-6

COST: Camp tuition rates range from \$175-345 per week. Sibling, multi-week discounts and financial support is available. Visit www.warwickcfa.org/camps for more information.





All Around The State ...

*BASE CAMP ADVENTURES (SEE AD THIS PAGE.)

www.ExperienceBaseCamp.org
Adventure Day Camp is a great way for your child to experience the thrill of the outdoors while introducing them to independence without being too far from home. The week-long program fills each day with adventures like archery, BB, boating, swimming, crafts, outdoor cooking, fire-building, nature appreciation and daily STEM projects. **AGES:** Boys and girls 1st through 5th grade
DATES: 8 Weeks starting June 24 – through August 16
COST: \$275 Adventure Card Holders; \$295 Non Adventure Card Holders
REGISTRATION: To register go to: experiencebasecamp.org/pages/abc-day-campsgrade

*CMC CHESS CAMP 598-7984 (SEE AD INSIDE BACK COVER.)

www.chessmasterconnections.com
CMC chess camp will teach your child more than chess. At CMC camp your child will: Increase logic and reasoning skills, improve decision-making skills, develop problem-solving techniques, increase self-confidence, develop analytical thinking skills, improve organizational habits and increase patience and persistence.

*GIRL SCOUTS OF SNE 331-4500 800-331-0149

500 Greenwich Avenue, Warwick
Girl Scout camps inspire curiosity, discovery, and problem-solving, all while helping campers to develop courage and teamwork skills. Not only will campers experience activities like rock climbing, archery, swimming, and hiking, but they will also make new friends and memories that last a lifetime! Our camps are open to all girl-identifying and gender-expansive youth and we offer day and overnight camp sessions for grades K-12 in Newport and West Kingston. For more information and to register online, visit gssne.org/camp.

ADVENTURE IS NEVER TOO FAR AWAY!

ALL KIDS
AGES 6-10



Archery • BB • Boating • Swimming • Crafts
Outdoor Cooking • Fire-Building
Nature Appreciation • Daily Stem Projects & more



— THREE LOCATIONS —
CRANSTON & HOPKINTON, RI • KINGSTON, MA

Registration info ExperienceBaseCamp.org

INTERESTED IN A TOUR?

ABC@ExperienceBaseCamp.org



2024

SUMMER CAMP

JUNE 17 - Aug 30

THE WOLF PACK IS BACK!

Wide World's state of the art facilities provide the perfect environment for summer camp, giving outdoor space and sunshine in the morning and well needed shade and air conditioning in the afternoon.

**FOR KIDS
AGES 5-12**

| Schedule |
|--------------------------|
| Early Drop-off/Free Play |
| Opening Camp Address |
| Activity 1 |
| Activity 2 |
| Snack Break |
| Activity 3 |
| Activity 4 |
| Lunch |
| Projector Movie |
| Activity 5 |
| Activity 6 |
| Late Pick-up/Free Play |



*Learn
more here*

THE PRIMARY FOCUS IS ACTIVE PLAY

FLEX PASS

FREE PERKS WITH ZERO COMMITMENTS

Don't get caught paying higher rates for summer camps and day care because of last minute decisions. Take advantage of our lower rates early with our **FLEX PASS!** Includes **free perks with zero schedule commitments.**



*CAMP INVENTION

..... **800-968-4332**

(SEE AD NEXT PAGE.)

invent.org/local |
campinvention@invent.org
Inspire your child's creativity and watch their confidence soar with our all-new Camp Invention® program, Illuminate! When this nationally acclaimed program comes to Rhode Island this summer, campers in grades K-6 will team up with friends for hands-on, open-ended STEM fun. They'll design their own light-up ball game, explore the science of illumination, tackle global water challenges and star in a prototyping game show! Each experience is designed to spark curiosity, build persistence and create an unforgettable summer. Visit invent.org/local to secure your spot!

Use promo code LOCAL25 by 3/27 to save \$25 or LOCAL15 by 5/16 to save \$15.

*ONE-ON-ONE BASKETBALL

..... **639-0814**

(SEE AD PAGE 1.)

www.1on1basketball.com
The ultimate goal of One on One is to develop within athletes the ability to motivate themselves and to teach them how to reach their potential as basketball players. For boys and girls ages 5-16. All girls, all boys, intensive and co-ed camps available. Locations throughout RI including camps in South County.

*SYLVAN LEARNING OF RI

..... **226-0661**

(SEE AD INSIDE FRONT COVER.)

Sylvan of Coventry:
<https://locations.sylvanlearning.com/us/coventry-ri>

Sylvan of Cumberland:

<https://locations.sylvanlearning.com/us/cumberland-ri>

Keep moving forward this summer with Sylvan's **Academic programs**. If you're looking for ways to introduce your child to new and fun experiences, our programs not only engage the mind, but are designed to have lasting impact outside the classroom. Enroll in our personalized Academic programs to build key grade-level reading, writing, and/or math skills and avoid the summer slide. **SUMMER SAT PREP SEMINAR:** This seminar is for students taking the August 24th SAT test, or students who find it difficult to prepare for the SAT, or ACT during the school year (other SAT and ACT Prep options also available). Enroll online, or call: 401-226-0661!

***WIDE WORLD WOLF PACK**
..... 481-5544

(SEE AD PREVIOUS PAGE.)

wideworldofindoorsports.com
Our Primary focus is active play. We offer Flex passes. Passes are discounted camp rates for parents looking to use multiple days. Passes can be used for multiple children within the same family and the days do not have to be consecutive. By purchasing a Flex pass you are able to take advantage of FREE early drop off and FREE late pick up. Free early drop off starts at 8am and free late pick up takes you to 5pm. We offer both indoor and outdoor activities. You can register by day week or month. Wolves are wanted!

***WOMEN & INFANTS BABYSITTING CAMP**
..... 276-7800

www.womenandinfants.org
Our Babysitting Academy is designed to teach girls and boys to become responsible babysitters. This course includes: Babysitting responsibilities, Child growth and development, Childcare, Activities for children, Positive discipline techniques, Accident prevention and safety, First Aid training, CPR training. Each student will receive a babysitting class packet and a course completion certificate.

Cost: \$75 per child. Monday – Friday, July 8–12, 9 am–12 pm and Monday – Friday, August 12–16, 9am – 12pm. To register, please visit our website at www.womenandinfants.org/child-birth-education For more information, please call Health Education at 401-276-7800.

***YMCA OF GREATER PROVIDENCE**
(SEE AD PAGE 3.)

Summer is a time for kids to be kids. And Y Day Camp is the place to make every precious summer day a great one! From swimming and sports to creative arts and archery, our camps offer a variety of activities to keep kids active and engaged all summer long. With **four convenient locations**, there's a camp near you for endless fun and adventure. **Camp Fuller**, our overnight summer camp nestled on the serene shores of Point Judith Pond in Wakefield, Rhode Island, caters to boys and girls aged 7-16 seeking an unforgettable summer adventure. Spanning across 64 acres of pristine woodlands and waterfront, the camp offers a picturesque



Camp Invention®

HIGH-ENERGY, HANDS-ON STEM

Secure your spot and save today at **INVENT.ORG/LOCAL**

2024

JESSEE SOCCER ACADEMY
Official Camps of U. of Rhode Island Women's Soccer



| | | |
|---|--|---|
| <p>ID CAMPS</p> <p>MARCH 30 ID Camp MAY 5 ID CAMP JUNE 9 ID CAMP Girls Ages 14-18: 10am to 3pm Cost: \$200.00</p> <p>REGISTER NOW</p> | <p>ELITE ID CAMP</p> <p>JULY 20-21 Girls Ages 8-14 9am to 3pm Cost: Single Day \$200 Both Days \$350.00</p> | <p>GOALKEEPER CAMP</p> <p>JULY 22-25 Girls & Boys Ages 14-18 9am to 3pm Cost: \$375 NEW</p> |
|---|--|---|

URI SOCCER COMPLEX
University of Rhode Island

www.JessieSoccerAcademy.com uriwsoccer@etal.uri.edu

backdrop for a wide array of thrilling water activities and exhilarating land-based adventures. Dates: Camps run in weekly sessions from June 24 - August 23.

Visit YCampAdventure.org to build your summer camp adventure today! RI CCAP accepted. Financial assistance is available to those who qualify.



FIND YOUR FUN. FIND YOUR Y.

At Y day camp, your kids will make new friends and have tons of fun as they explore new adventures each day.



**REGISTER
TODAY!**

FOR MORE INFORMATION:

Pawtucket Family YMCA

20 Summer Street, Pawtucket, RI
(401) 727-7900

Woonsocket YMCA

18 Federal Street, Woonsocket, RI
(401) 769-0791

Westwood YMCA

2093 Harkney Hill Rd, Coventry, RI
(401) 397-7779

MacColl YMCA

32 Breakneck Hill Rd, Lincoln, RI
(401) 725-0773

To learn more and register, visit
ymcapawtucket.org/programs/summer-camp/

For a better us® | ymcapawtucket.org

Chess Master Connections

Teaching Winning Strategies for Chess ... and Life.

Features fun, Champion-inspired chess instruction from Chess Masters and gifted instructors, led by 2007 and 2008 World Blitz Chess Champion, *Jorge Sammour-Hasbun.*

Summer Camps ■ School Enrichment Programs
■ Private/Group Lessons ■

CMC CHESS CAMPS



— Half and full day available —
AGES 5 -14 ■ BEGINNERS THROUGH ADVANCED

BARRINGTON

**St. Andrew's
School**
July 29-Aug 2

NEWPORT, RI

**St. Michael's
Country Day School**
July 15-19

PROVIDENCE, RI

Moses Brown School
June 24-28, July 8-12
July 22-26, August 5-9

EAST GREENWICH

Recreational Center
July 15-18,
July 29-August 1

Online training programs throughout the year!

To register online and learn more, please visit
www.chessmasterconnections.com
or call Yaneth @ 401-598-7984



SUMMER CAMPS 2024




OUR 27TH YEAR PROVIDING A VARIETY OF FUN & SAFE CAMP PROGRAMS



JUNE 17TH-AUGUST 30TH

CAMPS FOR KIDS AGE 4-14



-  Choose from our TW Camp or a variety of Specialty Camps
-  Extended Day options available
-  Check out our website for more details and to register!

CHOOSE FROM 3 LOCATIONS IN THE GREATER PROVIDENCE AREA

170 Jefferson Blvd | Warwick, RI | www.TeamworksWarwick.com
732 Lee's River Ave | Somerset, MA | www.TeamworksSomerset.com
1314 Fall River Ave | Seekonk, MA | www.TeamworksSeekonk.com